

Cantate Domino for String Quartet

Hans Leo Hassler (1564-1612)
arr. M. Kamada

Musical score for Violin I, Violin II, Viola, and Violoncello. The score is in common time (C) and consists of seven measures. The Violin I part starts with a half note G4, followed by quarter notes A4, B4, and C5. The Violin II part starts with a half note G4, followed by quarter notes A4, B4, and C5. The Viola part starts with a half note G3, followed by quarter notes A3, B3, and C4. The Violoncello part starts with a half note G2, followed by quarter notes A2, B2, and C3.

Musical score for Violin I, Violin II, Viola, and Violoncello, marked with a box 'A' and measure number 8. The score is in common time (C) and consists of seven measures. The Violin I part starts with a half note G4, followed by quarter notes A4, B4, and C5. The Violin II part starts with a half note G4, followed by quarter notes A4, B4, and C5. The Viola part starts with a half note G3, followed by quarter notes A3, B3, and C4. The Violoncello part starts with a half note G2, followed by quarter notes A2, B2, and C3.

Musical score for Violin I, Violin II, Viola, and Violoncello, marked with a box 'B' and measure number 14. The score is in 3/4 time and consists of eight measures. The Violin I part starts with a quarter note G4, followed by quarter notes A4, B4, and C5. The Violin II part starts with a quarter note G4, followed by quarter notes A4, B4, and C5. The Viola part starts with a quarter note G3, followed by quarter notes A3, B3, and C4. The Violoncello part starts with a quarter note G2, followed by quarter notes A2, B2, and C3.

23 **C**

31 **D**

38 **E**

43

Violin I

Cantate Domino for String Quartet

Hans Leo Hassler (1564-1612)
arr. M. Kamada

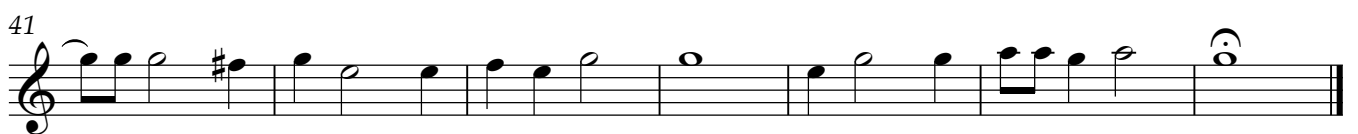
The musical score for Violin I consists of seven staves of music. The first staff begins with a treble clef and a common time signature (C). The second staff starts at measure 8, marked with a boxed 'A', and changes to a 3/4 time signature. The third staff starts at measure 14, marked with a boxed 'B', and changes to a 3/4 time signature. The fourth staff starts at measure 23, marked with a boxed 'C', and returns to common time. The fifth staff starts at measure 29, marked with a boxed 'D'. The sixth staff starts at measure 35, marked with a boxed 'E'. The seventh staff starts at measure 42 and concludes with a double bar line and repeat dots.

Violin II

Cantate Domino for String Quartet

Hans Leo Hassler (1564-1612)

arr. M. Kamada

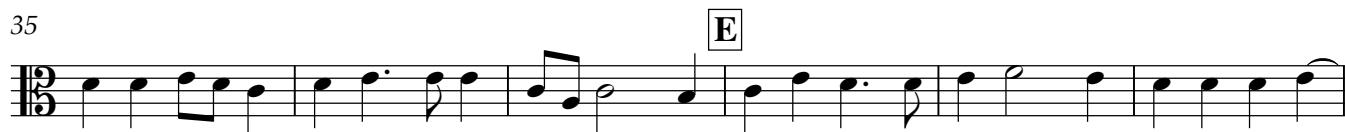


Viola

Cantate Domino for String Quartet

Hans Leo Hassler (1564-1612)

arr. M. Kamada



Violoncello

Cantate Domino for String Quartet

Hans Leo Hassler (1564-1612)
arr. M. Kamada

